



Dannele Peck
Director
Ag Economics



Windy Kelley
Coordinator
Extension



Hailey Wilmer
Postdoc Fellow
Ethnography



Matt Reeves
Co-Lead, FS
Rangeland Modeling



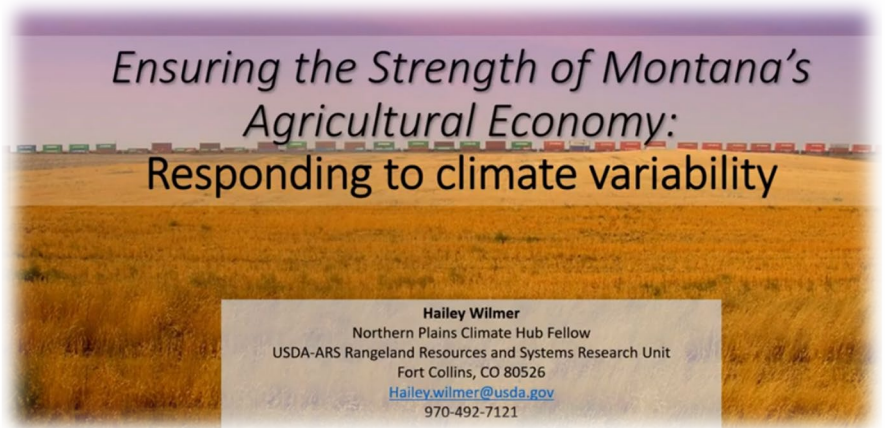
Rafael Guerrero
Co-Lead, NRCS
Director, Tech Center



Justin Derner
Research Leader
Rangeland Science

Selected Accomplishments in FY20 Q1

Northern Plains Climate Hub Fellow, Dr. Hailey Wilmer, gave an **invited keynote address** at the Burton K. Wheeler Center's 2019 Conference in Bozeman, Montana, for an **audience of 50 agricultural producers, state and local policymakers, agency professionals, community planners, and university scientists and administrators**. The conference theme was **"Ensuring the Strength of Montana's Agricultural Economy: Responding to Climate Variability."** Dr. Wilmer shared **innovative research and case studies on agricultural communities who are using science-based, climate-smart management practices to adapt to changing conditions**. Event organizers have made a recording of her keynote available at <https://youtu.be/I2fv-QBOW9k> (go to the 2:33:00 mark).



Climate Hub Fellow, Dr. Hailey Wilmer, presents her keynote address at the Burton K. Wheeler Center's 2019 Conference in Bozeman, Montana

Outreach

Northern Plains Climate Hub Coordinator, Windy Kelley, hosted an **interactive tradeshow booth** at the **Wyoming Association of Conservation District's** annual meeting in Buffalo, Wyoming. She **engaged one-on-one with 30+ conservation district representatives**, including special guest, Matthew Lohr, Chief of the **USDA Natural Resources Conservation Service (NRCS)**. Our Hub Coordinator thanked Chief Lohr for NRCS's **productive and valued partnership** with the USDA Climate Hubs.



Example of an NPCH interactive booth



Northern Plains Climate Hub Fellow, Dr. Hailey Wilmer, led a new journal article in *Agriculture and Human Values*. It describes how ranchers make decisions under complex and uncertain conditions, including drought.

<https://doi.org/10.1007/s10460-019-10003-w>

Dr. Wilmer also coauthored an article in *Rangeland Ecology & Management*. It challenges rangeland researchers to **consider diverse stakeholders and to **draw from multiple social science disciplines**.**

<https://doi.org/10.1016/j.rama.2019.10.005>



The NPCH team developed a new webpage, “**No-Till: From Science to Practice**,” available at the USDA Climate Hubs’ official website. This new page provides Northern Plains crop producers with easy access to **practical resources** on **no-till** and other **reduced-tillage** practices, including **USDA-ARS research**.

<https://www.climatehubs.usda.gov/index.php/hubs/northern-plains/topic/no-till-science-practice>

No-Till: From Science to Practice

No-till is not a new concept — it has been a management practice for several decades. Yet it has gained fresh momentum as a key soil health practice recommended by the USDA NRCS. Adopting a new management practice is no small decision though. It is essential to learn as much as possible from scientists and fellow farmers about the pros and cons of alternative tillage options before deciding which one you might adopt to achieve your management or business goals.

The USDA Northern Plains Climate Hub has compiled a short list of resources about no-till



How can no-till help protect your soil, conserve soil moisture, and increase profitability? USDA ARS researchers dig into no-till.