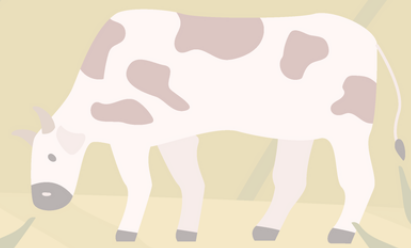


CLIMATE RISKS TO DAIRY FARMS IN THE NORTHEASTERN UNITED STATES

Climate change poses significant risks to the dairy farming industry in the northeastern United States. The region, known for its vibrant dairy sector, faces various challenges that are expected to intensify as the impacts of climate change continue.



Increased Temperature

Frequent heatwaves, heat stress, fertility problems



Quality and production of milk, cow health, nutritional value of forage crops



Changing Precipitation Patterns

Intense rainfall events, long dry periods, compaction and erosion



Availability of pasture and forage, timing and suitability of pasture, plant growth



Extreme Weather Events

Storms, hurricanes, blizzards, infrastructure damage, power outages, livestock losses, flooding, contamination, erosion



Cow health and milk production, availability and quality of feed



Changing Pest Dynamics

Changes in population and distribution of pests, cow health issues, investments in pest control



Growth and quality of feed crops



Changing Growing Seasons and Feed Availability

Shifts in length and timing of growing seasons, production costs, changes in crop yield and quality, opportunities to add new crops and practices



Economic Challenges

Costs for cooling systems, repairs, and feed, financial strain, the need to diversify income streams and/or crop and forage options



HOW TO BUILD RESILIENCE

- Enhanced nutrient management, using tools to determine nutrient needs
- Diversify forage crop rotations and pasture species mixes
- Introduce agroforestry
- Integrated pest management (mix of chemical pest control with animal/crop management)
- Improve barn infrastructure for better airflow and cooling
- Feed management that addresses feed sources and rations based on cows' needs during various stages

MORE RESOURCES

[Grazing Management](#)

[Agricultural Vulnerabilities](#)

[Managing Heat Stress](#)

[NCA5](#)

USDA Northeast Climate Hub
U.S. DEPARTMENT OF AGRICULTURE

USDA is an equal opportunity provider, employer, and lender.